



startupindia

Department of Industrial Policy and Promotion
Ministry of Commerce and Industry
Government of India



CREATING NEW QUALITY BENCHMARK IN ROOFTOP SOLAR

Choose WATTSCORE, if you are looking for Quality Installation with TIER-1 equipment, dedicated customer support and prompt Operation & maintenance services, all at one place.

ABOUT US

WATTSCORE® is a SOLAR Plant construction company as well as provider of innovative technologies and Solutions for Solar Projects. We have Qualified, experienced and highly motivated teams for Solar EPC and Solar O&M. We are not just installer or system integrator rather we are an complete End- to- End Solar Solution provider. We offer vast range of operation and maintenance services to our customers and also secure your solar investment by providing Solar Insurance with every project. which means, "Getting SOLAR installed from us will not only help you REDUCE YOUR ELECTRICITY BILL but give you PEACE OF MIND for lifetime. We are customer-oriented organization with the motto of let them "Score high on energy". "Energy is forever and so is our relationship with customer".

WATTSCORE® ADVANTAGE

- Govt. Recognized Start-up (Govt of India as well as Rajasthan)
- Tier-1 Solar Equipments
- Consultive approach
- Operation & Maintenance Support
- Solar Project Insurance
- Varied offerings to suit customer budget & requirement
- Authorized Distributor for PANASONIC, MINDRA & V GUARD
- 100+ Happy Customers
- Dedicated Customer Support
- 500 KWp+ projects under Solar Subsidy Scheme
- Empaneled with Govt. for Solar Subsidy Scheme
- Member of REAR Renewable Energy Association

Helping you to Score High on Energy

REACH US

G-6, Agroha Heritage, Central Spine,
Vidhyadhar Nagar, Jaipur- 302023

/wattscoreenergy

RECOGNIZED BY GOVT. OF RAJASTHAN AS WELL AS GOVT. OF INDIA

startupindia

Call for Free Site Feasibility/Consultation:-
89291-42122/ 92144-44400

www.wattscore.com

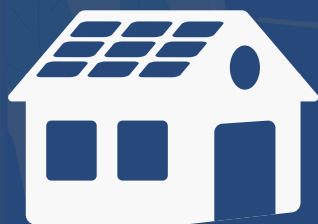
Write to us :- info@wattscore.com

[Shop Online](https://shop.wattscore.com/)
<https://shop.wattscore.com/>

OUR OFFERINGS

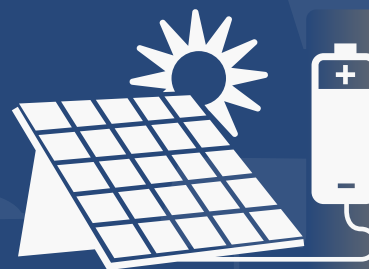


WATTSCORE® is not just another SOLAR EPC company rather we are Solar Energy Solution Provider. We have most diversified offerings to meet the customized requirements of the customers through consulting, advisory and continuous support throughout the project life. We add value to the customer by delivering reliable, durable, best quality & high yielding solar solutions at a right price. and Operation & Maintenance (O&M) services in the SOLAR Energy sector. We offer the following solutions to our prospective customer which will reduce their carbon footprints and enhance financial benefits.



ROOFTOP SOLAR PROJECTS

We are an end-to-end solutions provider for Rooftop Solar Projects and known as "ROOFTOP SOLAR EXPERTS". From Initial Site Feasibility Study to liaising with Govt. till the project commissioning, complete solution is provided under single roof. We handle complete project cycle from initial site analysis to commissioning/Net-metering. We are responsible for end to end coordination with Discom for timely delivery and superior quality. We have required expertise to offer the best range of Engineering, Procurement and Construction (EPC).



OFF-GRID SOLAR SOLUTIONS

Net-metering is the biggest advantages of going solar, however, if there is frequent power cut in the area, resident should opt for Off-grid Solar solution by which you can get rid of power cut and will get the supply 24X7. Even if there is seldom power cut, still one should have minimum back at his home with On-Grid System. We are authorized distributor for V-Guard, which is known for Smart off-grid Solar Solutions. It works with On-Grid Solar System or as a stand alone system utilizing battery back in the best possible mode. Our team access the load requirement and design the best possible off-grid system as per the requirement.



OPERATION & MAINTENANCE

Once installed, the Solar PV system needs proper Operation and Maintenance (O&M), so as to deliver what is expected from it. Whereas, time invested in development and construction of a plant requires a few months, O&M activity is continued up to 20-30 Years, therefore, increasing the quality of O&M services is important and, in contrast, neglecting O&M part is risky. WATTSCORE® ENERGY is a Solar PV O&M solution provider having dedicated O&M Cell focusing on best O&M services with Reliability, Maintainability and Safety as the core.



SOLAR INSURANCE

Installing a SOLAR Project at your home needs a huge amount of investment, which will give returns till his lifecycle i.e. 25-30 Yrs. But in case of any mishappening to any equipment, consumer need to invest more money in replacing the same. We provide the Solar Insurance for your project so that you can enjoy the free electricity life time without any tension. Unforeseen mishappening can leave you facing tremendous emotional stress, and financial loss. With insurance in place, you will be free from any financial burden due to any damage to the solar equipments.

PROJECT VARIANTS



When it comes to Solar Projects especially in Residential, customer did not get the chance to see the actual products neither he got the time to do the research, the only thing he compare is price without discussing on new technology, quality and make of products. We will be giving him the option to choose him as per his need and budget. Our engineers discuss the project requirement in detail and help him decide the best option. We have different variants of Rooftop Solar Project:-

OPTIONS TO CHOOSE FROM

VARIANT	BASIC ★★★★☆	STANDARD ★★★★☆	PREMIUM ★★★★★
MODULE TYPE	Poly	Mono PERC	Mono PERC
MODULE RATING	335 Wp	450 Wp	540 Wp
STRUCTURE	Painted	Pre GI	HDGI
SOLAR INSURANCE	NA	1 Year	5 Year
O&M	NA	1 Year	5 Year
METER	HPL	Genus	Secure
DCDB	NA	YES	YES

- The modules included in the abovementioned variants are any ALMM (Approved List of Modules & Manufacturers) list of modules.
- The abovementioned cost is tentative for the project with standard height of structure and the DC Cable length. The actual cost may vary based on the site feasibility.
- There is one more variant i.e. "PANASONIC" which includes everything in "PREMIUM" with PANASONIC make of Modules & Inverter.

PROJECT SHOWCASE



WATTSORE® is Rajasthan's leading Rooftop Solar Company having diversified offerings to serve the customers. We have installed 100s of Residential projects in Jaipur only, covering all major localities/areas. Below shown are just a few projects to showcase. For more details or any project reference in your area; please contact us at 921-44444-00 or 89291-42122.



10 KW

Vidhyut Nagar, Jaipur



10 KW

Malviya Nagar, Jaipur



10 KW

Durgapura, Jaipur



8 KW

Taron ki Koot, Jaipur



10 KW

Janta Colony, Jaipur



8 KW

Vaishali Nagar, Jaipur



8 KW

Bajaj Nagar, Jaipur



8 KW

Jhotwara, Jaipur



6 KW

Mansarovar, Jaipur

PROJECT CASE STUDY



We are customer-oriented organization with the motto of let our customers "Score high on energy". "Energy is forever and so is our relationship with customer". We give value to our customers for their investment in solar in terms of high quality products and services and our installation is as per the international standards. All our customers are happily saving on their electricity bills and most of them are exporting the power to the Discom and receiving zero or negative bills every month. Here are few case studies for your understanding.

Electricity Bill Reduction to Zero or Negative

Consumer Status.:	Regular	Address:	3/86 MANSAROVER JAIPUR			
Area Code.:	U	Pole No.:				
Bill Issued Date	Bill Month	Bill No.	Amt Before Due Date	Due Date Cash	Amt after due date	View Bill as PDF
09-11-2021	202111	112118789	90	29-11-2021	90	Pdf
13-10-2021	202110	102128482	-101	27-10-2021	-101	Pdf
11-09-2021	202109	092123488	-1158	27-09-2021	-1158	Pdf
09-08-2021	202108	082120512	-2128	24-08-2021	-2128	Pdf
05-07-2021	202107	072120791	-2607	20-07-2021	-2607	Pdf
08-06-2021	202106	062118005	0	21-06-2021	0	Pdf
10-05-2021	202105	052110442	633	24-05-2021	646	Pdf
06-04-2021	202104	042129497	0	26-04-2021	0	Pdf
26-02-2021	202103	032122702	0	17-03-2021	0	Pdf
05-02-2021	202102	022121173	0	22-02-2021	0	Pdf
05-01-2021	202101	10021	6746	18-01-2021	6872	Pdf
10-12-2020	202012	10081	10258	22-12-2020	10450	Pdf

Billing Calculations

22	Date of Previous reading	01-11-2021		(II) Solar/Sprinklar/Rural Rebate/Def/HCC	-0	
23	Bi-directional meter No.	3930684	21	Total Nigam Dues (Sr No 12 to 20)	480	
24	Current Recorded Meter Details	KWH Export(b)	KWH Import(a)	22	Electricity Duty	212.52
25	Meter Status	R		23	WCC	0
26	Present KWH Reading	7167.8	8906	24	UC	53.1
27	Present KVAH Reading	0	0	25	Other Debit/Credit Nigam Dues	0
28	Present KVA	0	0	26	Other Debit/Credit Electricity Duty	0
29	Previous KWH Reading	6131	8552	27	Other Debit/Credit WCC	0
30	Previous KVAH Reading	0	0	28	Other Debit/Credit UC	0
31	Difference KWH (26-29)	1036.8	354	29	Other Debit/Credit LED/Deferred Payment Scheme	137.45
32	Difference KVAH (27-30)	0	0	30	Amount Adjusted (Code)	0
33	Multiplying Factor (MF)	1		31	Total Amount (Sr No 21 to 30)	883.07
34	Total KWH import/export	1036.8	354	32	Outstanding Amount of Previous Bill	0
35	Total KVAH import/export	0	0	33	Deferred Amount (DEF 2nd Instalment)	0
36	Tr. Losses (KWH)	0	0	34	(I) Tariff Subsidy	0
37	Tr. Losses (KVAH)	0	0		(II) Hail Strom/ Other Subsidy	0
38	Tr. Losses (KVA)	0	0	35	Amount (Sr No 31+32-33-34)	883.07
39	Net Import/Export (KWH)	-682.8	0	36	Amount of Solar Power Purchased	2143.99
40	Net Import/Export (KVAH)	0	0	37	Amount of Solar Power Adjusted against Bill(Sundry)	883.07
41	Net Import/Export (KVA)	0	0	38	Amount of Solar Power Payable to Consumer	1260.92
42	Billing Demand	0	0	39	Amount Payable By consumer up to Due Date	0
43	Power Factor	0	0	40	LPS/DPS	0
44	Billed Units	0	0	41	Amount Payable After Due Date (Sr No 39 + 40)	0

SOLAR BUYING GUIDE



Solar Power Projects are for long term (25 Years) and require huge investment hence, the customer need to do understand the basics before buying so as to get the reliable, durable, best quality & high yielding solar project at a right price and will easily get the service as & When required. There are few points to be consider before going SOLAR: -

WHAT WOULD BE IDEAL SIZE OF PROJECT AS PER CONSUMPTION?

Project capacity required depends up on two factors i.e. Your Monthly Unit Consumption (KWh) & the availability of Shadow free area. 1 KW of SPV Project generate around 150 Units per month and required 100 Sqft of shadow free area. Under Net-Metering, you can sell your excess electricity generated back to the grid. However, it's important to weigh up the financial incentives on offer, which maybe quite low. The most benefit is gained by 'self-consumption', which means offsetting the higher retail tariff that you would pay by using power generated by your system instead of drawing power from the grid. Accordingly, you should match your system size to your household consumption.

HOW TO DECIDE ON SELECTION OF VITAL COMPONENTS?

SOLAR MODULES:- The amount of electricity a given solar panel can produce will produce is dependent on several factors, including the power rating, power tolerance, efficiency and temperature coefficient. The decision on type of SOLAR Module depends up on two factors i.e. Technology and Brand (Manufacturer). As far as technology concerned there are two popular technologies i.e. Polycrystalline & Mono-crystalline. Mono-crystalline is the latest technology and more efficient than Polycrystalline. Cost wise Mono-crystalline modules are bit costlier than Polycrystalline. Poly-Crystalline modules are available up to 340-350 Wp, However, Mono-Perc Modules are available up to 600 Wp. The solar panel warranty conditions and its manufacturer reputation is also to be taken care while deciding for the brand.

OTHER EQUIPMENTS:- •BoS refers to all components of a PV system other than the modules & Inverter like structure, cables or wires, switches, enclosures, fuses, ground fault detectors,connectors, junction boxes, cables, small nut & bolts etc., choosing low quality products may have risk for power losses, system failure/downtime, or even a fire may increase significantly during the operation phase. we cannot ignore the quality of earthing and other protection components for a better working and trouble-free life. As a result, for the well-being of solar power generation, these components of the total system means a lot. It can prove to be fatal for human life as well as power system, if any low-quality standards or compromise is used for ABDB, Earthing, AJB, SPD, etc. In Array Junction Box (AJB) and AC Distribution Box (ACDB), most of the solar power installer does not add the required protection devices to save money. However, as per the design fuses, surge protection device (SPD) and DC Isolator if not present in the Inverter should be added, to have a safer functioning of the Solar PV rooftop system on the DC side AJB. For instance, if DC side surge protection device and fuses are not added, and a high surge comes, then it may damage the Inverter, and we all are aware that Inverter Company's warranty does not cover claim on damage due to such scenarios.

WHAT ARE THE POINTS TO BE TAKEN CARE?

- **Trustworthiness of EPC Player:** - EPC (Engineering, Procurement & Construction) Player is very vital part of the chain & plays the most important role so one must choose EPC Player who is good at Engineering & Construction, procurement may be common for all but customer should determine if the prospective vendor has a record of quality work in the solar installation. Ask for references & Obtain independent feedback from past customers.
- **System Design Approval:** -Customer should be aware of how the system look like once installed and should review and approve the system design before installation to avoid any issues later on.
- **Procurement of Vital components:** -Procurement of vital components who plays a major role and carry long term warranties like Modules and Inverters should be procured from Authorized Distributors or directly from Manufacturers so as to take care of quality as well as the warranty assurance.
- **Warranties & Insurance:** - Different components have different warranty terms and conditions, customer should understand fully the warranty periods and well as the term and conditions. Ask your solar company to explain what your warranties protect, for how long, and who stands behind them.
- **Liasioning:** - Installation of Grid Connected Solar Projects requires various approvals and agreements with Govt Depts like Discom, Electrical Inspector etc. Liasioning part should be taken care by EPC Player
- **AMC and O&M:** - Customer should be aware of type of maintenance or cleaning required& is there any AMC .
- **Solar Project Insurance:-** Being a cost intensive investment, the project should be insured so as to reduce the risk of any mis-happening to the project.



89291-42122

www.wattscore.com

www.shop.wattscore.com

info@wattscore.com